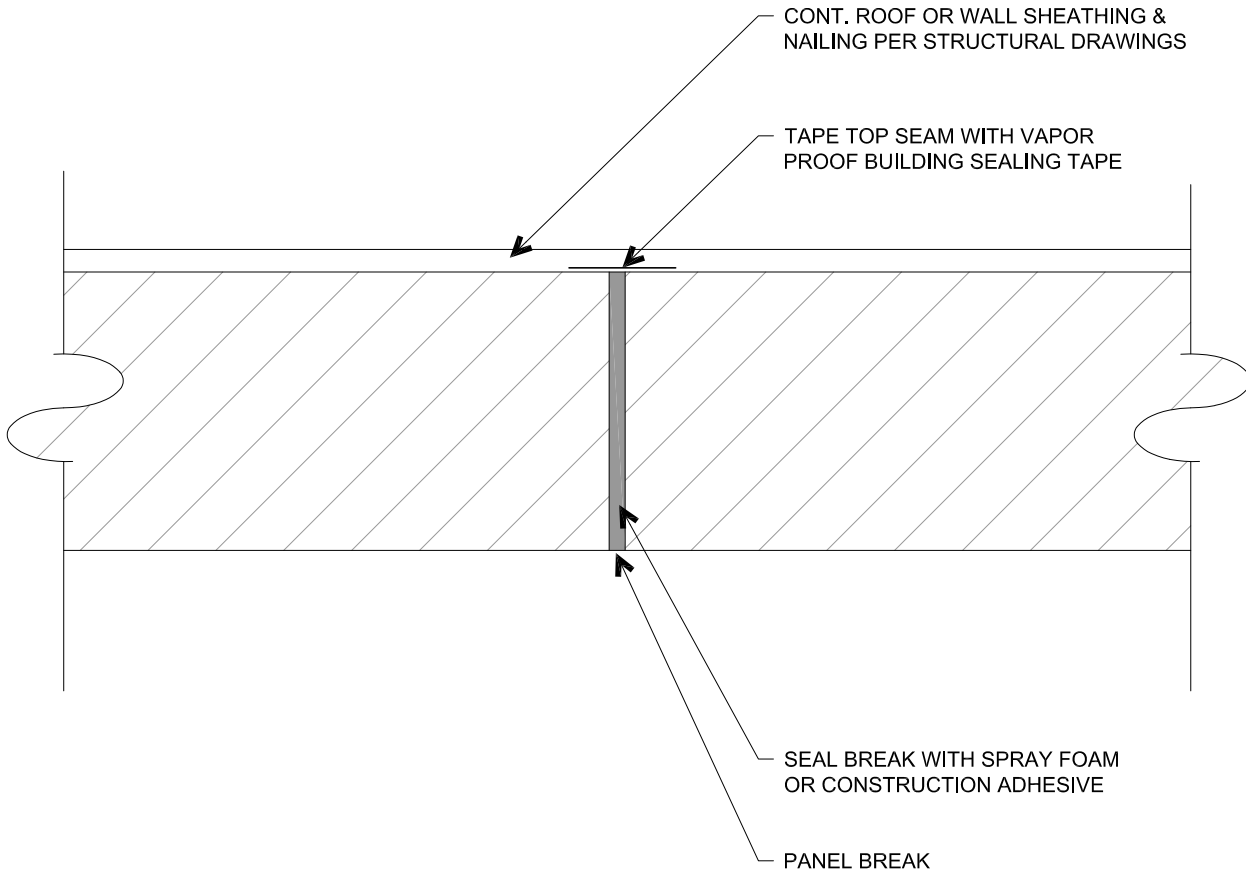


**RAY CORE INC.**  
**ENERGY SAVING ROOF WALL & HEADER SYSTEMS**  
 www.raycore.com  
 305 East Elva Street • Idaho Falls, Idaho 83401  
 877.552.2440 • info@raycore.com  
 Permission granted for RAY-CORE projects only.  
 © RAY-CORE, INC.

DETAIL NO. SF\_R9\_Raycore sealing panel break  
 BY KPL/Alpen Engineering, Inc.  
 DATE 2/26/18  
 REVISION DATE \_\_\_\_\_

*STRUCTURAL DETAIL*



**R9**

**SEALING RAYCORE PANEL BREAK**

SCALE: 1:5

SF\_R9\_Raycore sealing panel break

NOTE:

- (1) ALL DIMENSIONS ARE IN mm UNLESS NOTED OTHERWISE
- (2) PANEL BREAKS ARE NOT ALLOWED BETWEEN SUPPORT POINTS EXCEPT WHERE TRANSVERSE TO OTHER STRUCTURAL FRAMING WHICH IS SPACED AT 600 MM O.C. OR LESS.
- (3) SHEATHING PANEL JOINTS ARE NOT TO COINCIDE WITH RAYCORE PANEL BREAKS.