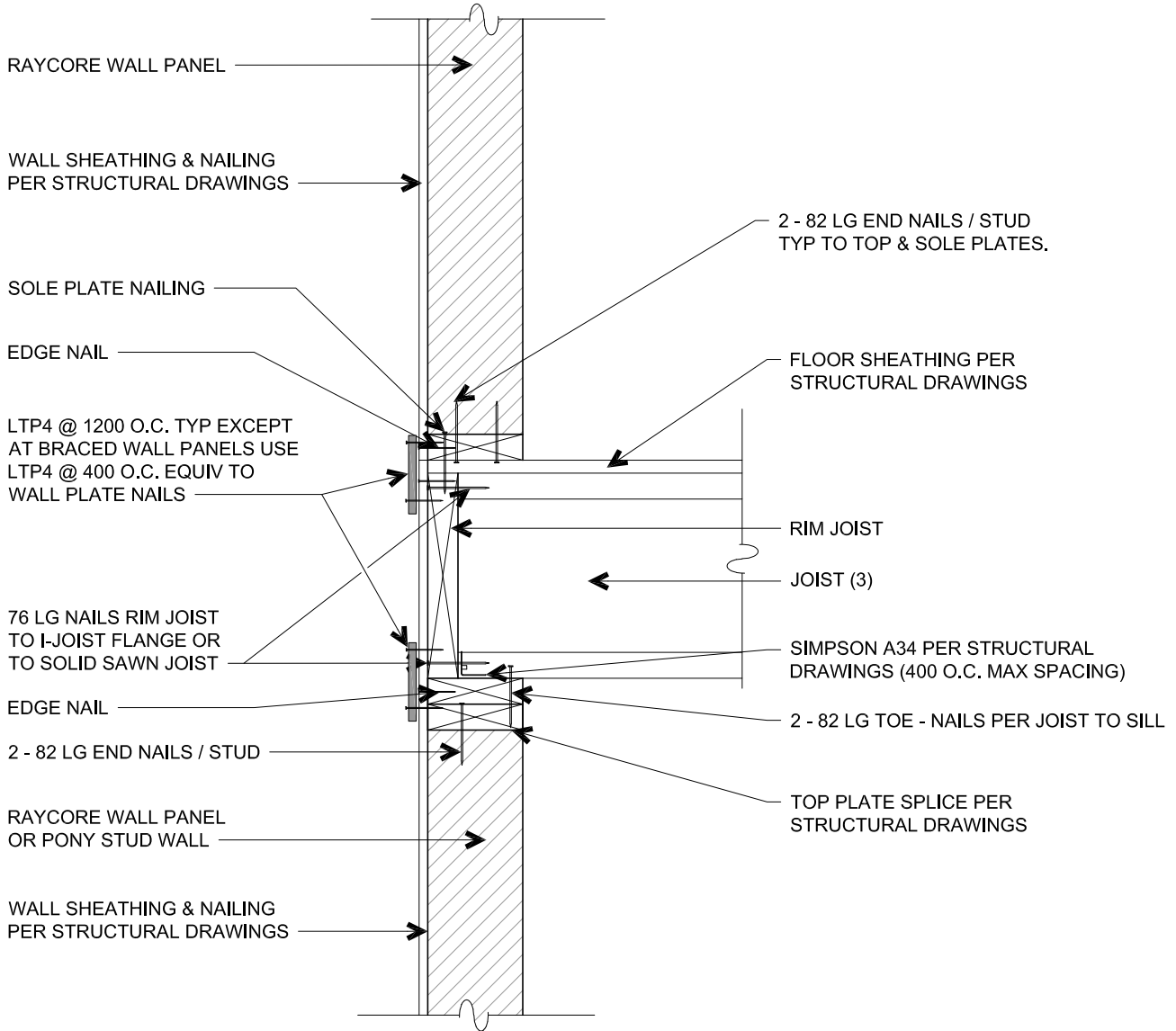


RAY CORE INC.
ENERGY SAVING ROOF WALL & HEADER SYSTEMS
 www.raycore.com
 305 East Elva Street • Idaho Falls, Idaho 83401
 877.552.2440 • info@raycore.com
 Permission granted for RAY-CORE projects only.
 © RAY-CORE, INC.

DETAIL NO. SF_FL1_Raycore shear xfer at floor-CAN
 BY KPL/Alpen Engineering, Inc.
 DATE 2/26/18
 REVISION DATE _____

STRUCTURAL DETAIL



FL1

RAYCORE-SHEAR TRANSFER AT WOOD FLOOR

SCALE: 1:10

SF_FL1_Raycore shear xfer at floor-CAN

NOTES:

- (1) ALL DIMENSIONS ARE IN mm UNLESS NOTED OTHERWISE.
- (2) THIS DETAIL APPLIES TO CONVENTIONAL 1-SIDED SHEARWALLS OR BRACED WALL PANELS ONLY. FOR 2-SIDED SHEARWALLS CONSULT A STRUCTURAL ENGINEER.
- (3) WALL PERPENDICULAR TO JOIST CONDITION SHOWN, PARALLEL CONDITION IS SIMILAR.