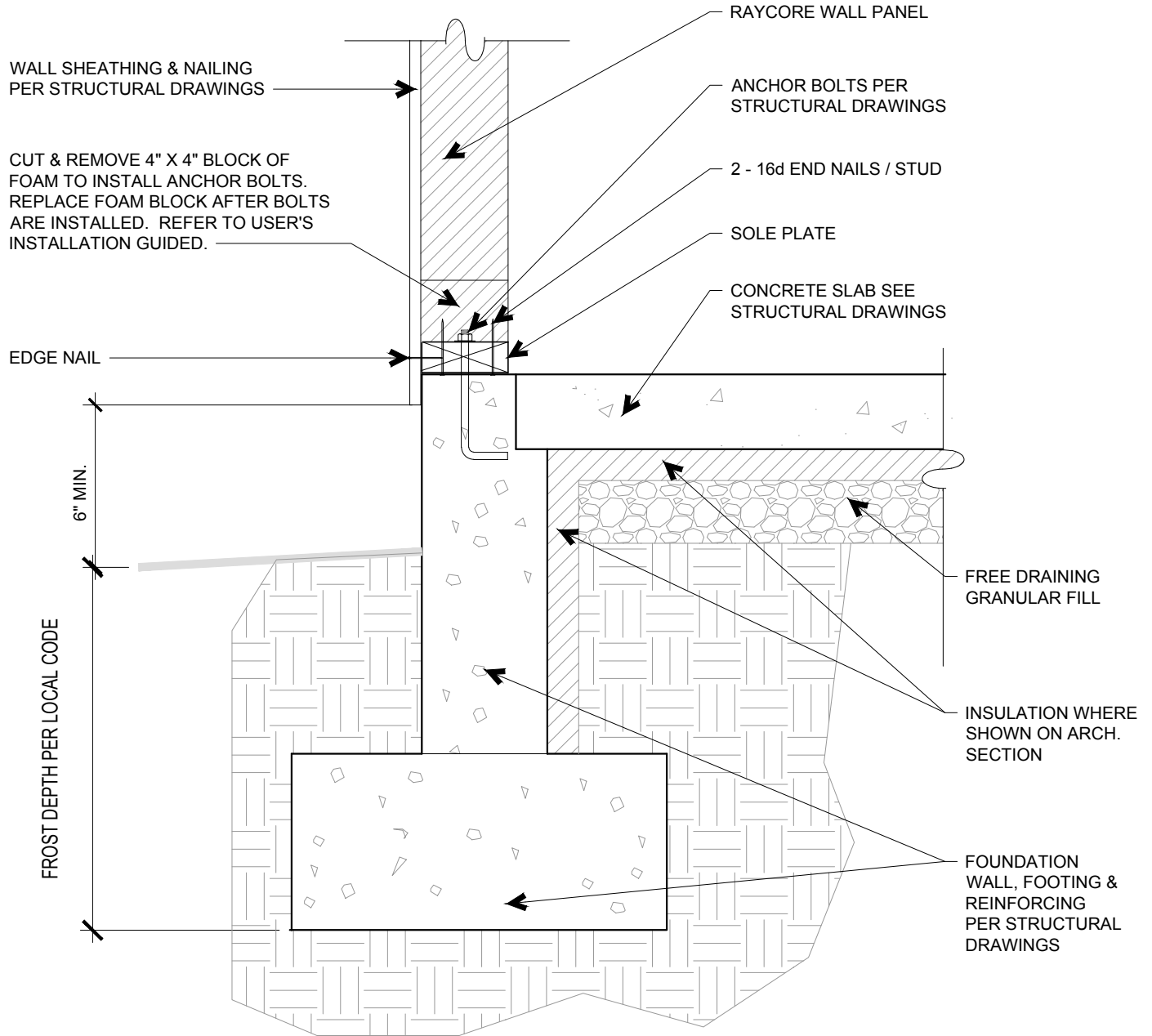


**RAY CORE INC.**  
**ENERGY SAVING ROOF WALL & HEADER SYSTEMS**  
[www.raycore.com](http://www.raycore.com)  
 305 East Elva Street • Idaho Falls, Idaho 83401  
 877.552.2440 • [info@raycore.com](mailto:info@raycore.com)  
 Permission granted for RAY-CORE projects only.  
 © RAY-CORE, INC.

DETAIL NO. SF\_F1\_RAYCORE at foundation wall exterior-US  
 BY KPL/Alpen Engineering, Inc.  
 DATE 2/26/18  
 REVISION DATE \_\_\_\_\_

*STRUCTURAL DETAIL*



**F1**

**RAYCORE AT CONCRETE FOUNDATION WALL**

SCALE: 1" = 1'-0"

SF\_F1\_RAYCORE at foundation wall exterior-US

NOTES:

- (1) ALL DIMENSIONS ARE IN INCHES UNLESS NOTED OTHERWISE.
- (2) THIS DETAIL APPLIES TO CONVENTIONAL 1-SIDED SHEARWALLS OR BRACED WALL PANELS ONLY. FOR 2-SIDED SHEARWALLS CONSULT A STRUCTURAL ENGINEER.